

SETTING STANDARDS FOR LEATHER SOFTNESS WORLDWIDE

# ST300 SOFTNESS TESTER



**MSA**

the ST300 is a means of determining the softness of leather  
without defacing the hide or skin

The **ST300 Softness Tester** is a precision instrument that provides a dependable means of monitoring leather softness. The ST300 is non-destructive, so doesn't require samples to be removed from the leather prior to testing. This enables a quality system to be set-up between supplier and customer whenever leather softness is a priority.



## DIGITAL SOFTNESS MEASUREMENT

The ST300D Digital Softness Tester is an easy to use unit offering two major features not found on the analogue version: (1) digitally displayed figures to within 0.01 mm; and (2) statistical analysis of measurements taken.

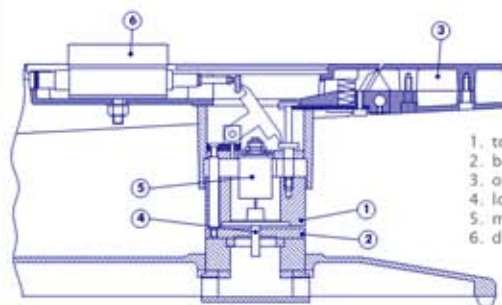
The ST300D features an RS 232 interface, which enables links to be made to a computer for data manipulation and storage. To facilitate this, MSA can supply an ingenious software product that allows the user to connect the ST300D directly to a PC or laptop, and send the instruments reading to such programs as spreadsheets, databases etc. Imported data can then be manipulated and analysed on the users own software of choice. Known as a software wedge, it's easily configured for use with any Windows application. Because the link between ST300D and your PC is provided in real time, flawless data entry is achieved. The wedge supports a rich set of dynamic data exchange (DDE) commands that allow other applications to take complete control of it's functions. This means that your target application program can perform actions once data is received from the ST300D, e.g. graphs or charts can be updated in real time, or calculations performed.



Alternatively, we can now offer wireless capabilities for the ST300D - comprising of a compact radio module that fits into the RS 232 on the digital gauge, and a receiver that fits into your PC. This allows for wireless transmission of measurement values from each gauge directly to your PC, using the latest development in interface technologies. Communicating with up to 120 gauges, and with a maximum transmission distance of up to 200m, the wireless data transfer module connects via a port on your PC. The PC transmits address numbers to each gauge's radio module where they are stored. The transmission of a measurement value is triggered simply by pressing the data key on the gauge module or gauge itself. An audible tone and visible light confirms a successful data transmission. Special data coding between the PC and the gauge radio module guarantees absolute data security.

Good quality control is a key factor in running a successful, profitable business. In this respect, the Leather Industry is no exception. Traditionally, the grading of leather softness was achieved by means of subjective sensory analysis by skilled inspectors. The need was clearly identified for a simple, inexpensive and easy to use machine which would produce reliable, repeatable measurements on a range of leather with varying thickness and softness. The ST300 was developed and designed in conjunction with BLC Leather Technology Centre with the needs of both suppliers and users in mind.

The ST300 is available as a conventional analogue unit (*graduated in 0.1mm divisions*), or as an electronic digital unit (*displaying figures to 0.01mm/0.0005"*). The digital version features an RS 232 interface, thereby enabling links to be made to a computer for data manipulation and storage. Using electronic test equipment, both versions can be calibrated precisely and re-set to original factory parameters.



1. top leather clamp
2. bottom leather clamp
3. operating lever
4. load pin
5. miniature pneumatic cylinder
6. dial indicator



## INDUSTRY STANDARD

The ST300 was adopted as the **industry standard** in 1995 and it's method of measurement is now referred to as IUP/36 (equivalent ISO method ISO 17235:2002). The ST300 allows buyers to specify what degree of softness is required, removing the element of subjective opinion.



MSA ENGINEERING SYSTEMS LIMITED, 3 Assured Drive, Thurmaston, Leicester, LE4 8BB, United Kingdom  
phone +44 (0)116 260 8866 | fax +44 (0)116 260 8861 | sales@msa-engineering.co.uk | www.msa-engineering.co.uk  
Registered Office: 12 Shibden Hall Croft, Shibden Hall Road, Halifax, W. Yorkshire, HX3 9XF, UK | Registered No. 2636196 England

